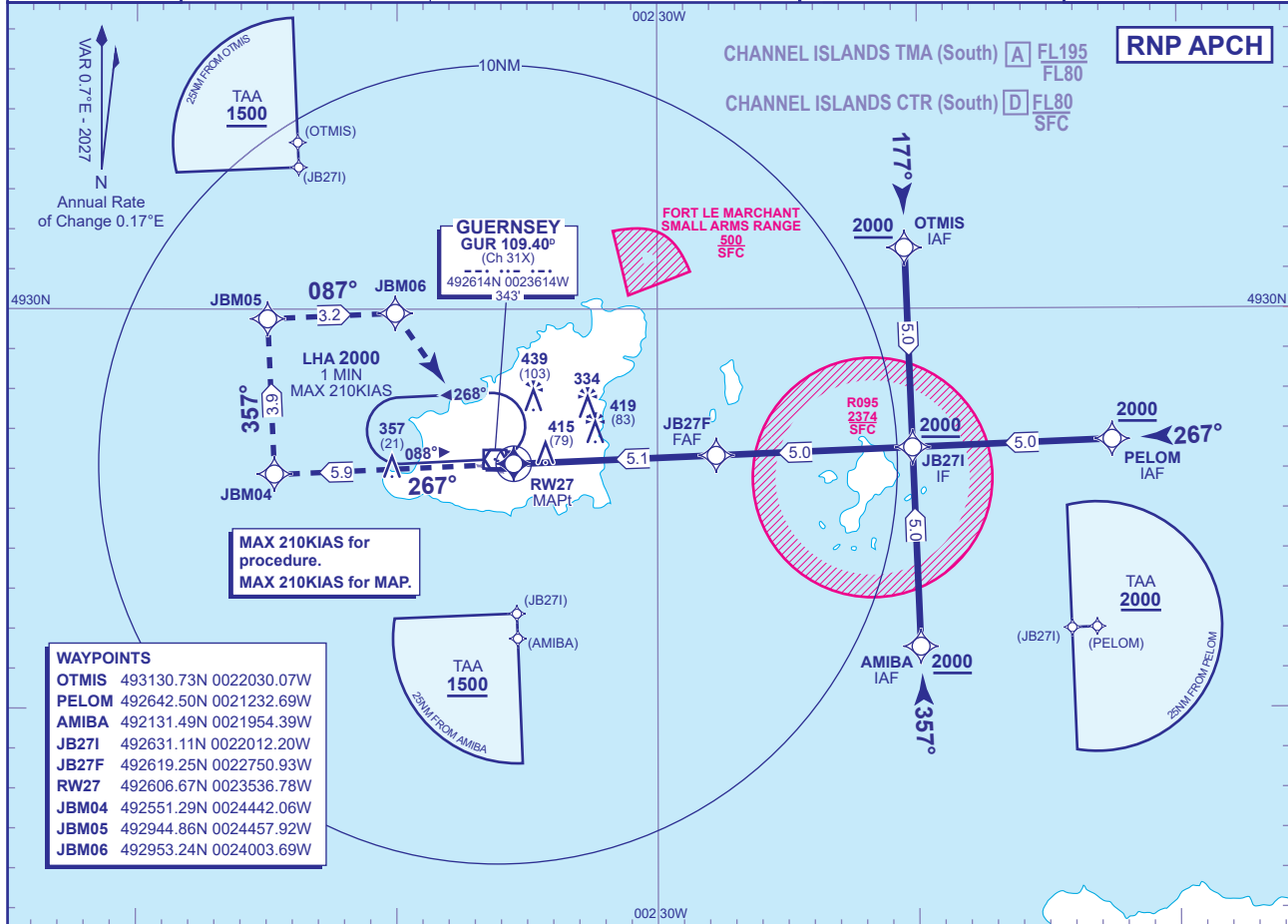


TRANSITION ALTITUDE **5000**



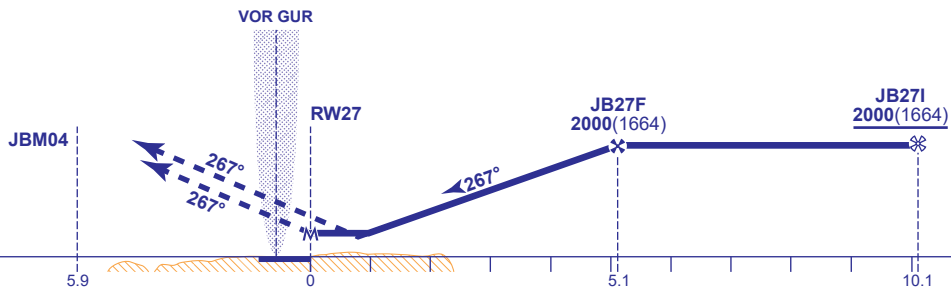
APP	128.655	GUERNSEY APPROACH	AD ELEVATION 336
TWR	119.955	GUERNSEY TOWER	THR ELEVATION 336
GMC	121.805	GUERNSEY GROUND	OBSTACLE ELEVATION 439 AMSL (103) (ABOVE THR)
RAD	124.505	GUERNSEY RADAR	
ATIS	109.400	GUERNSEY INFORMATION	BEARINGS ARE MAGNETIC



NM to RW27	5	4	3	2	1
ALT(HGT)	1980(1644)	1660(1324)	1340(1004)	1020(684)	700(364)

TCH 50	
--------	--

Continuous climb to **3000**. Initially climb straight ahead to **JBM04**, then turn right to **JBM05**, **JBM06** and **VOR GUR** to join the hold or as directed by ATC



Aircraft Category		A	B	C	D	Rate of descent	G/S KT	160	140	120	100	80
							FT/MIN	850	740	640	530	420
OCA (OCH)	LPV	536(200)	536(200)	536(200)	536(200)							
	LNAV/VNAV	660(324)	660(324)	660(324)	660(324)							
	LNAV	680(344)	680(344)	680(344)	680(344)							
VM(C)OCA (OCH AAL)	Total Area	740(404)	830(494)	930(594)	1030(694)							

4 Aircraft will normally be required to hold not lower than **3000**.

AD 2-EGJB-8-7